

ANPING TAILONG

HARDWARE&WIRE MESH PRODUCTS CO.,LTD

TLWY[®]
TaiLong Fence



LIVESTOCK EQUIPMENT
SHEEP HANDLERS



Mobile:

+86-133-2318-6988

+86-153-6985-6999



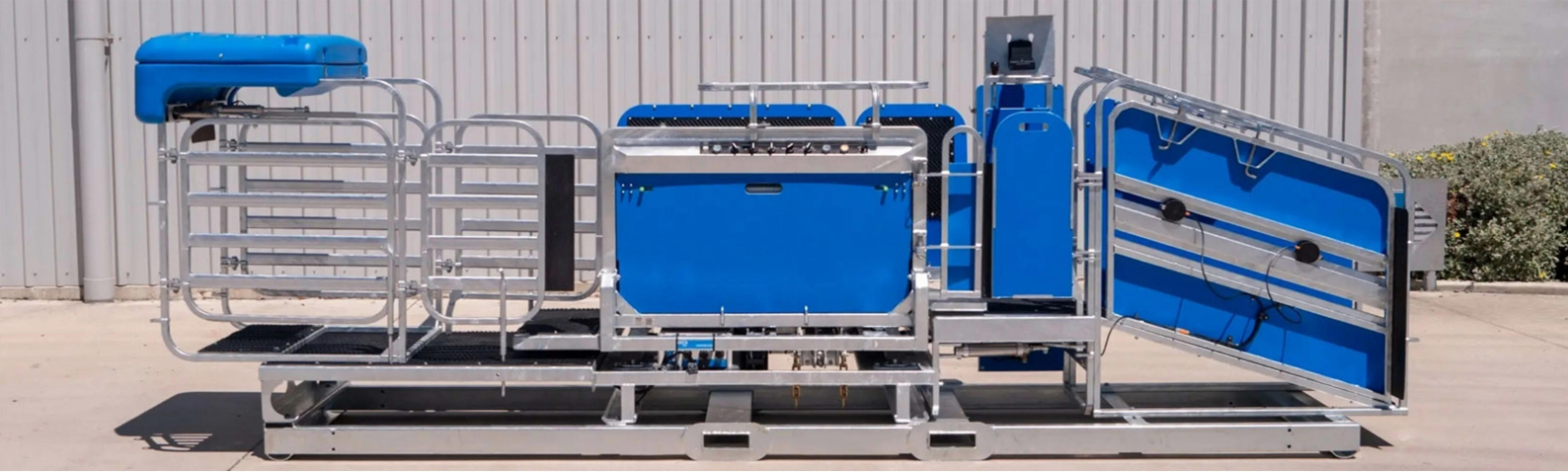
Email:

Sales@fence-global.com

Sales@wiremesh-global.com

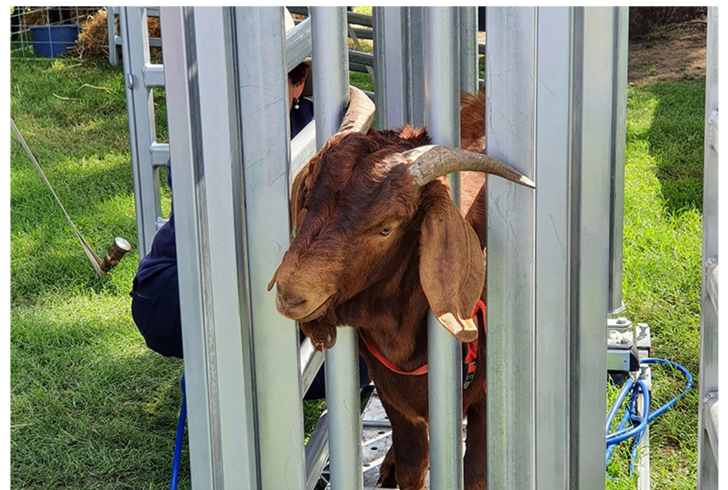
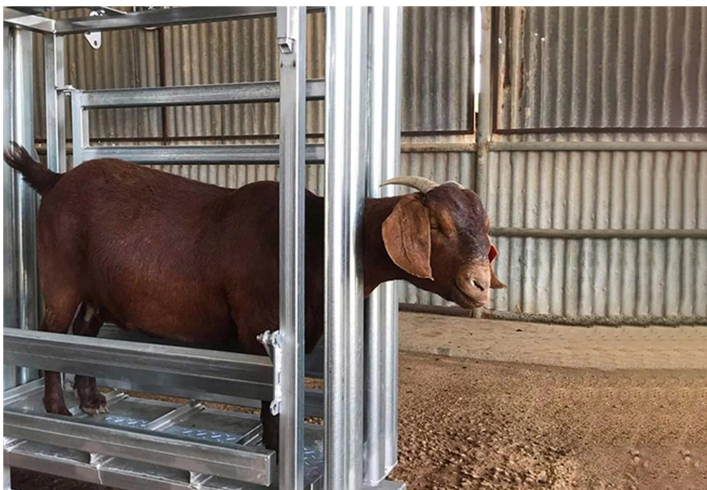


No.19, Jingsi road,
high-tech-industrialdevelopment
zone, Anping, Hebei, China



Sheep Handlers

Ensure safety and strength with our premium sheep handlers, designed specifically for the demanding tasks on Australian farms. Oversize, over strength capacity, this crush provides superior stability for vet checks, tagging, health treatments, and more.





DESCRIPTION & CATEGORY

Sometimes you can't find anyone to help care for your sheep, and hiring someone might be beyond your capabilities. Therefore, we offer a truly single-person handling solution.

This mechanized sheep handling unit is designed to create a safer and calmer working environment for both human handlers and animals.

This makes shearing, hoof checks, medication administration, injections, and ear tagging easier, while keeping both of you calm.

The sheep handling unit can be adapted to your existing sheep pen.

Made from hot-dip galvanized steel

Internal dimensions: 1100 mm (L) x 400 mm (W)

External dimensions: 1200 mm (L) x 650 mm (W) – can be transported on a single pallet.



Different Style:



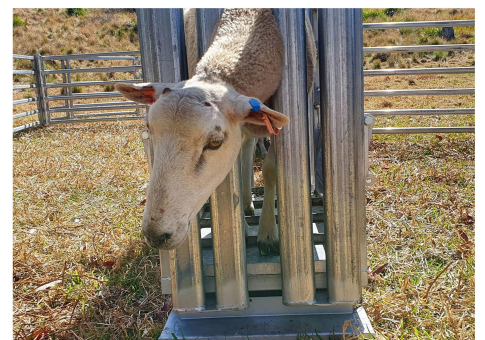
More Details:



Double Side Access



Elevated Floor Platform



Head Bale Design

Production Flow Chart



Hot-Dip Galvanized Steel Pipes



Galvanized Sheet



Laser Cutting



Laser Welding



Polishings

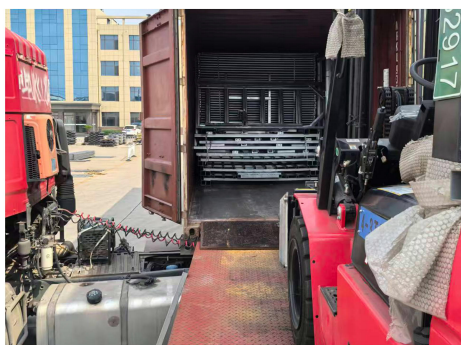
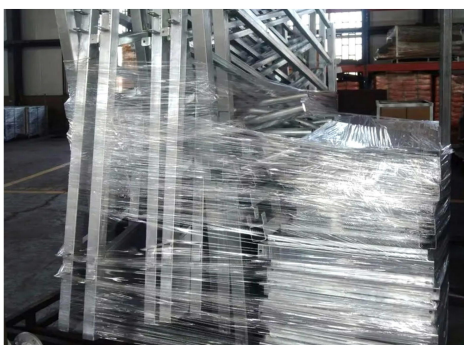


Electrostatic Spraying



Finish

Package & Delivery





FEATURES & APPLICATION

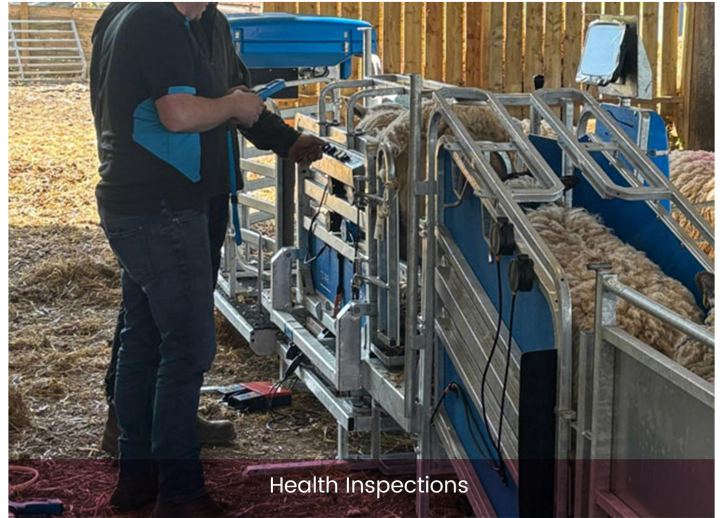
FEATURES

This mechanized sheep handling unit is designed to create a safer and calmer working environment for both human handlers and animals. It makes shearing, hoof inspection, medication administration, injections, and ear tagging easier, while allowing both parties to remain calm. The unit can be retrofitted into your existing sheep pen. Made of hot-dip galvanized material.

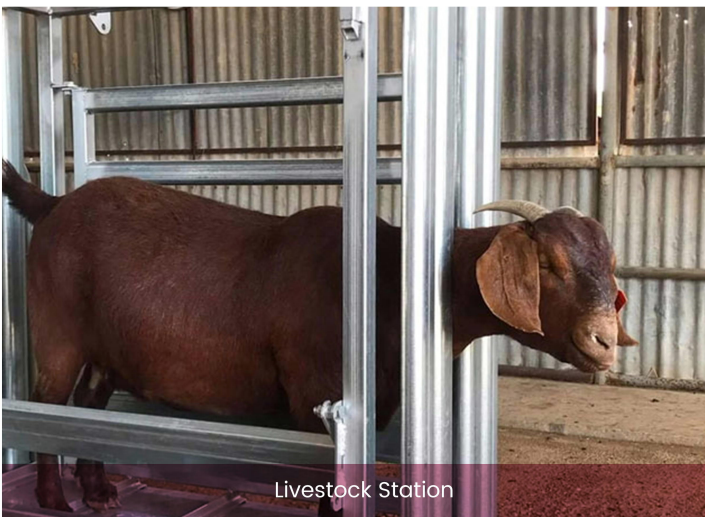
APPLICATION



Farm



Health Inspections



Livestock Station



ANPING TAILONG
HARDWARE&WIRE MESH PRODUCTS CO.,LTD

+86-133-2318-6988
+86-153-6985-6999

Sales@fence-global.com
Sales@wiremesh-global.com

No.19, Jingsi road,
high-tech-industrialdevelopment
zone, Anping, Hebei, China

WHATSAPP

