

ANPING TAILONG

HARDWARE&WIRE MESH PRODUCTS CO.,LTD

TLWY[®]
TaiLong Fence



PADEL TENNIS COURT PADEL COURT



Mobile:

+86-133-2318-6988
+86-153-6985-6999



Email:

Sales@fence-global.com
Sales@wiremesh-global.com



No.19, Jingsi road,
high-tech-industrialdevelopment
zone, Anping, Hebei, China



Padel Tennis Court

A plywood tennis court is an enclosed sports field system that combines the characteristics of tennis and squash. It is surrounded by tempered glass and a high-strength metal mesh structure, allowing the ball to bounce off the walls for sustained play. This product is widely used in sports clubs, commercial complexes, schools, and community sports centers, and is a rapidly growing new type of sports facility in recent years. The court foundation is crucial. It must be solid, level, and have good drainage. An atypical outdoor court requires a concrete base of at least 20–25 cm thick, with a smooth and even surface. Proper groundwork is especially important for outdoor courts to prevent sinking or water accumulation.





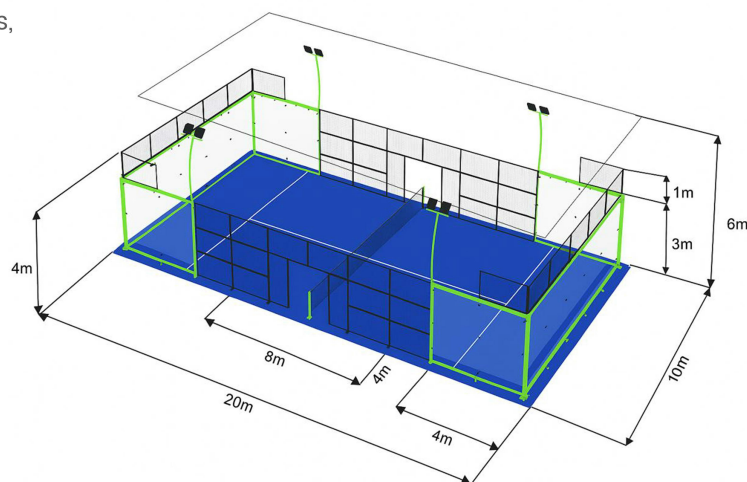
DESCRIPTION

The Standard Padel Tennis Court is engineered to meet international World Padel Tour (WPT) specifications, providing a high-performance playing environment for clubs, residential communities, sports centers, and private villas.

It features a fully welded, high-strength steel structure, tempered safety glass walls, anti-corrosion mesh panels, and professional-grade lighting systems designed for outdoor durability.

The court is designed for easy installation, structural stability, excellent visibility, and long-term weather resistance, ensuring consistent performance in all climate conditions.

This product is ideal for commercial facilities seeking a professional solution or private clients looking to enhance their luxury sports amenities.



Product Parameters

1 Court Dimensions

Length: 20 meters

Width: 10 meters

Total Playing Area: 200 m²

Standard Height: Back wall: 3–4 m

Side walls: 3 m + mesh

extension

2 Structural Frame

Material: S235 or Q235
high-strength structural steel

Surface Treatment:

1. Hot-dip galvanized
(min. 60–80 μm)

2. Exterior polyester powder coating
(min. 80 μm)

Color Options:

Black, Blue, Green, Grey
(customizable)

3 Glass Walls Material

Tempered safety glass

Thickness: 10 or 12 mm

Sizes: 3 m × 2 m, 2 m × 2 m panels

Fixings: Stainless steel brackets and
vibration-free anchors

Certifications: EN 12150 Safety Glass
Standard

4 Mesh Panels (Metal Fence)

Type: Welded anti-vibration mesh

Wire Diameter: 4–5 mm

Aperture: 50 × 50 mm or 50 × 100 mm

Corrosion Protection: HDG + powder coating

Noise Reduction: Silicone isolation mounts optional

5 Lighting System

Light Poles: 6–8 m height

Lamps: 200W–300W LED floodlights

Brightness: 500–750 lux (competition level) Energy

Efficiency: ≥ 130 lm/W

Installation: Side-mounted or corner-mounted

6 Flooring Options

1. Artificial Turf (Standard)

Pile height: 10–15 mm

Sand-filled system

UV-resistant, anti-slip

2. Acrylic Sports Flooring (Optional)

Anti-slip coating

High ball-bounce consistency

3. EPDM High-Elastic Surface (Premium)

Shock absorption 25%–35%

7 Optional Features

Indoor or outdoor roof canopy

Panoramic design (pillar-free back structure)

Super panoramic design (tournament level)

Logo printing on glass, turf, or metal frames

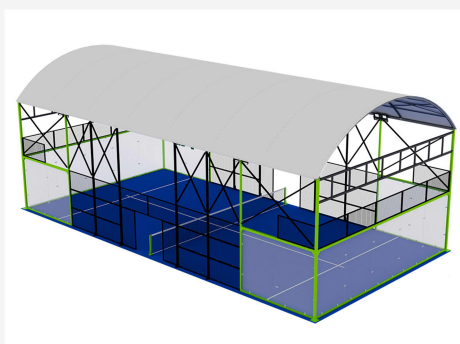
Side LED ambient lighting

Drainage gutter system

Different Types



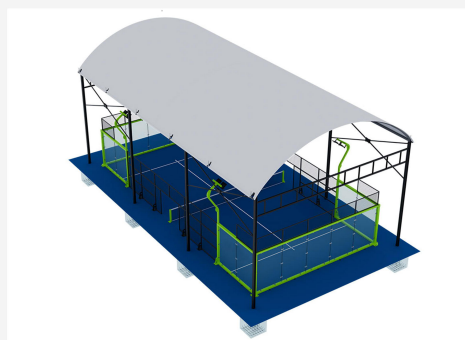
360° Full Panoramic Padel Court



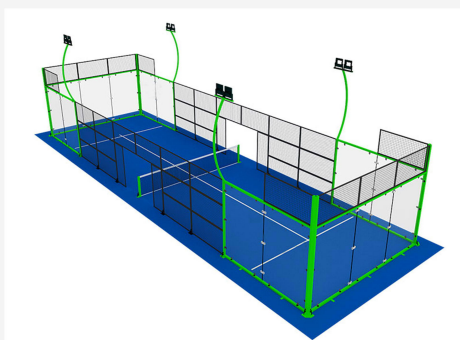
Covered Padel Courts



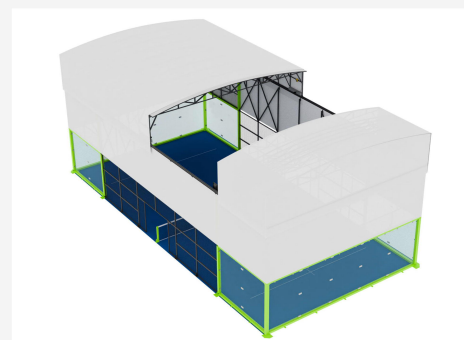
Panoramic Padel Court



Reinforced Higher Underground Roof



Single Padel Court

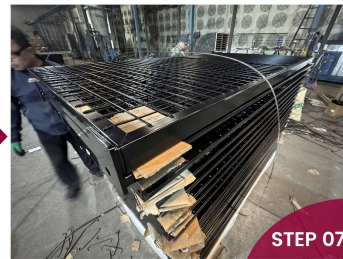


Padel Court Electric Canopy

Column Production



Screen Frame Production



Package & Delivery





FEATURES & APPLICATION

FEATURES

✔ Safety

Preventing balls from leaving the field: Cricket is a high-speed sport, and the ball is frequently hit out of the field. The fence needs to effectively prevent the ball from flying out of the playing area, avoiding injury to spectators or other personnel. Therefore, the height of the fence and the tightness of the mesh need to be carefully designed.

Protection: The material and structure of the fence must be able to withstand the impact of the ball, preventing damage to the fence due to high ball speed or impact. The fence needs to be particularly robust at the boundaries or around the bowling area.

No sharp parts: All parts of the fence (such as metal pipes, connectors, etc.) should be designed to be smooth and rounded, without any sharp parts, to prevent injury to people in case of collision.

✔ Durability and Wind Resistance

Durability: Fences usually need to have extremely high durability, able to withstand harsh weather conditions (such as storms, heavy rain, extreme cold or heat) and wear and tear from regular use.

Wind resistance: Since cricket fields are usually open areas, the fence needs to be designed with good wind resistance. Mesh structures are more effective than solid structures in reducing wind pressure, making the fence less likely to collapse or deform due to strong winds.

✔ Aesthetics

Color and Design: The color of the fence is usually coordinated with the surrounding environment or the overall design style of the venue. Common colors include green, black, and silver. Color is not only for aesthetic purposes; certain colors (such as green) can also help reduce the fence's visual interference for spectators.

Simple Design: The fence design is generally simple and modern, without excessive or complex decorations. While focusing on functionality, it also ensures visual neatness and aesthetics.

✔ Environmental Adaptability

Adaptability to Different Climate Conditions: Cricket field fences need to be able to adapt to different climate conditions in different regions. In cold regions, the fence material must be able to withstand low temperatures; in tropical regions, the fence should be able to withstand high temperatures and prolonged sun exposure.

UV Resistance: If the fence uses plastic materials (such as plastic-coated wire mesh), it needs to have UV resistance to prevent material aging and damage caused by prolonged exposure to ultraviolet radiation.

✔ Height and Visibility

Fence height: Depending on the requirements of the playing field, the fence height is usually between 2.5 meters and 5 meters. A high fence can prevent high-speed shots from flying out of the field, but it also needs to be designed so as not to obstruct the view of the spectators. The fence around the perimeter of the field needs to be designed according to the surrounding environment and the viewing experience of the spectators.

Visibility: Fences usually use a mesh structure (such as wire mesh, chain-link fence, etc.) to ensure that spectators have the clearest possible view of the game. Even with a high fence, a highly transparent mesh can prevent excessive obstruction of the view.

✔ Material Selection

Frame material: The frame of the fence is generally made of corrosion-resistant materials such as galvanized steel pipes, stainless steel, or aluminum alloy. These materials ensure the strength and durability of the fence.

Mesh material: The mesh part usually uses wire mesh or chain-link fence. Wire mesh is more common because it provides better load-bearing capacity and durability. The size and thickness of the mesh need to be adjusted according to specific needs. **Corrosion Protection:** Metal parts are often treated with anti-corrosion measures, such as hot-dip galvanizing, electroplating, or applying anti-corrosion coatings, to ensure the fence can withstand prolonged exposure to the elements and prevent rust and corrosion.

✔ Ease of Maintenance

Damage Resistance: The design and material selection of the fence should consider its resistance to damage during daily use. Since cricket field fences are frequently subjected to ball impacts, the fence mesh and frame should be able to withstand repeated impacts without damage.

Cleaning and Repair: The fence should be easy to clean and maintain. Metal parts should not easily accumulate dust, and the mesh should be easy to clean. If damaged, the fence should be easy to repair or replace damaged parts.

✔ Functionality

Preventing Other Objects from Entering the Field: The fence should not only prevent balls from flying out of the field but also prevent other objects from entering the playing area. For example, children, animals, or other objects entering the field may disrupt the game. The fence should have an effective barrier function to prevent unauthorized entry.

Gate and Entrance Design: The fence needs to have appropriately designed gates or entrances to facilitate access for athletes, staff, and security personnel. The gates should be easy and quick to open, but also secure to prevent accidental opening or damage.



FEATURES & APPLICATION

FEATURES

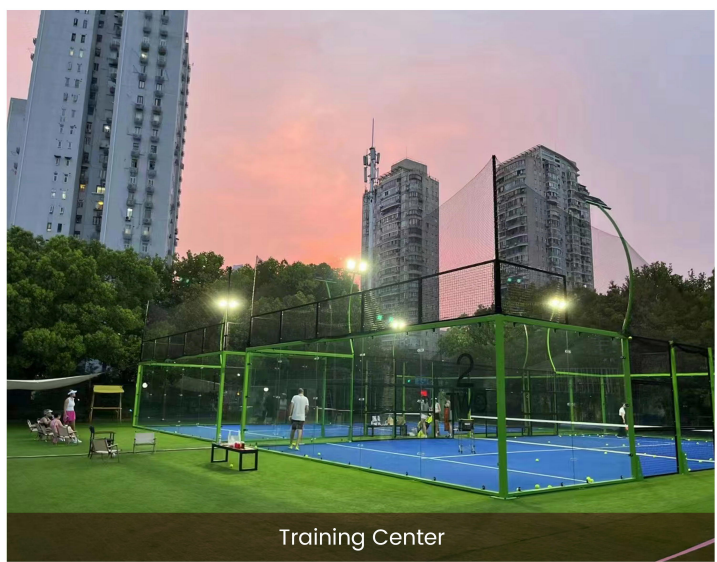
✔ Special Area Design

Boundary and Pitch Protection: Some cricket ground fences may feature special designs in specific areas (such as the pitch or boundary lines) to provide extra protection, ensuring that balls are less likely to be hit out of the playing area while not interfering with the game.

✔ Environmental Friendliness

Material Recycling: With increasing environmental awareness, the materials used for fences may be environmentally friendly or easily recyclable metal materials. This reduces the environmental burden during the construction and maintenance of the grounds.

APPLICATION





ANPING TAILONG

HARDWARE&WIRE MESH PRODUCTS CO.,LTD

+86-133-2318-6988
+86-153-6985-6999

Sales@fence-global.com
Sales@wiremesh-global.com

No.19, Jingsi road,
high-tech-industrialdevelopment
zone, Anping, Hebei, China

WHATSAPP

