

# ANPING TAILONG

HARDWARE&WIRE MESH PRODUCTS CO.,LTD

**TLWY**<sup>®</sup>  
**TaiLong Fence**



## HORSE STABLE



Mobile:

+86-133-2318-6988  
+86-153-6985-6999



Email:

Sales@fence-global.com  
Sales@wiremesh-global.com



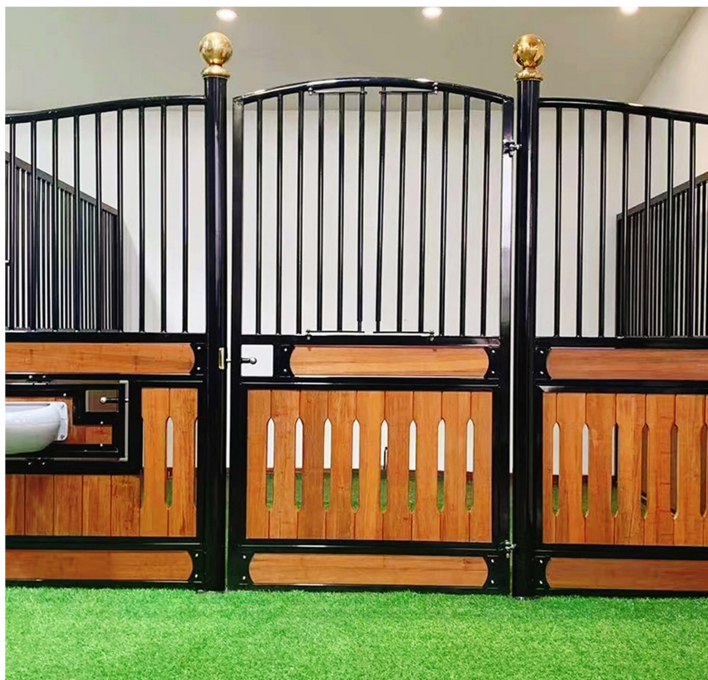
No.19, Jingsi road,  
high-tech-industrialdevelopment  
zone, Anping, Hebei, China



## Horse Stable

The Horse Stable is a premium, durable, and well-designed housing system tailored to provide optimal comfort, safety, and convenience for horses. Manufactured using high-quality galvanized steel frames combined with bamboo, pine, or composite wood panels, the stable ensures long-lasting performance and an attractive appearance suitable for professional equestrian centers, private farms, and racing facilities.

Our stables are built to meet international standards and offer superior ventilation, structural stability, and maximum protection. Each unit is designed with careful attention to horse behavior and daily management needs, creating a secure and stress-free environment.





## DESCRIPTION

**Frame Material:** Pressure-treated pine wood (traditional) / galvanized steel (heavy-duty); anti-rot, anti-corrosion

**Panel Material:** Solid wood planks (18–25mm thick), steel mesh (optional for ventilation), PVC cladding (weather-resistant option)

### Stall Dimensions (Per Unit):

1. Standard Size: Width: 3.6m (12ft) × Depth: 3.6m (12ft) × Height: 2.4–2.7m (8–9ft)
2. Large Size (for draft horses): Width: 4.2m (14ft) × Depth: 4.2m (14ft) × Height: 2.7–3.0m (9–10ft)
3. Walkway Width (between stalls): 1.8–2.4m (6–8ft)

**Door Type:** Sliding door (wood/steel frame)

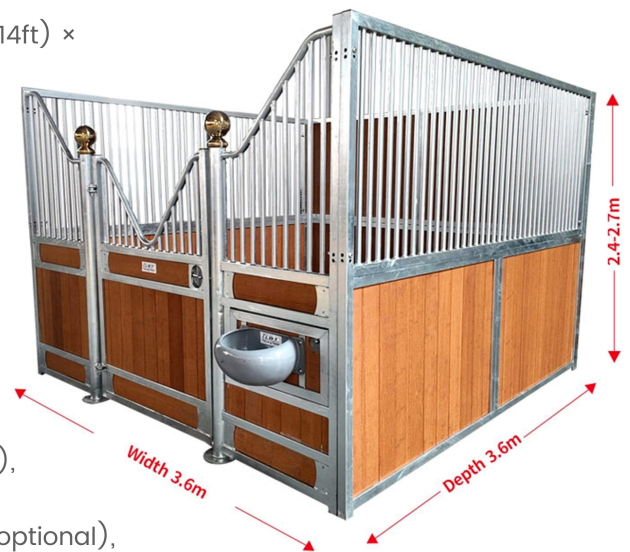
**Swing door:** door width: 1.2–1.5m (4–5ft)

**Floor:** Anti-slip rubber mat / concrete (with drainage grooves); mat thickness: 20–30mm

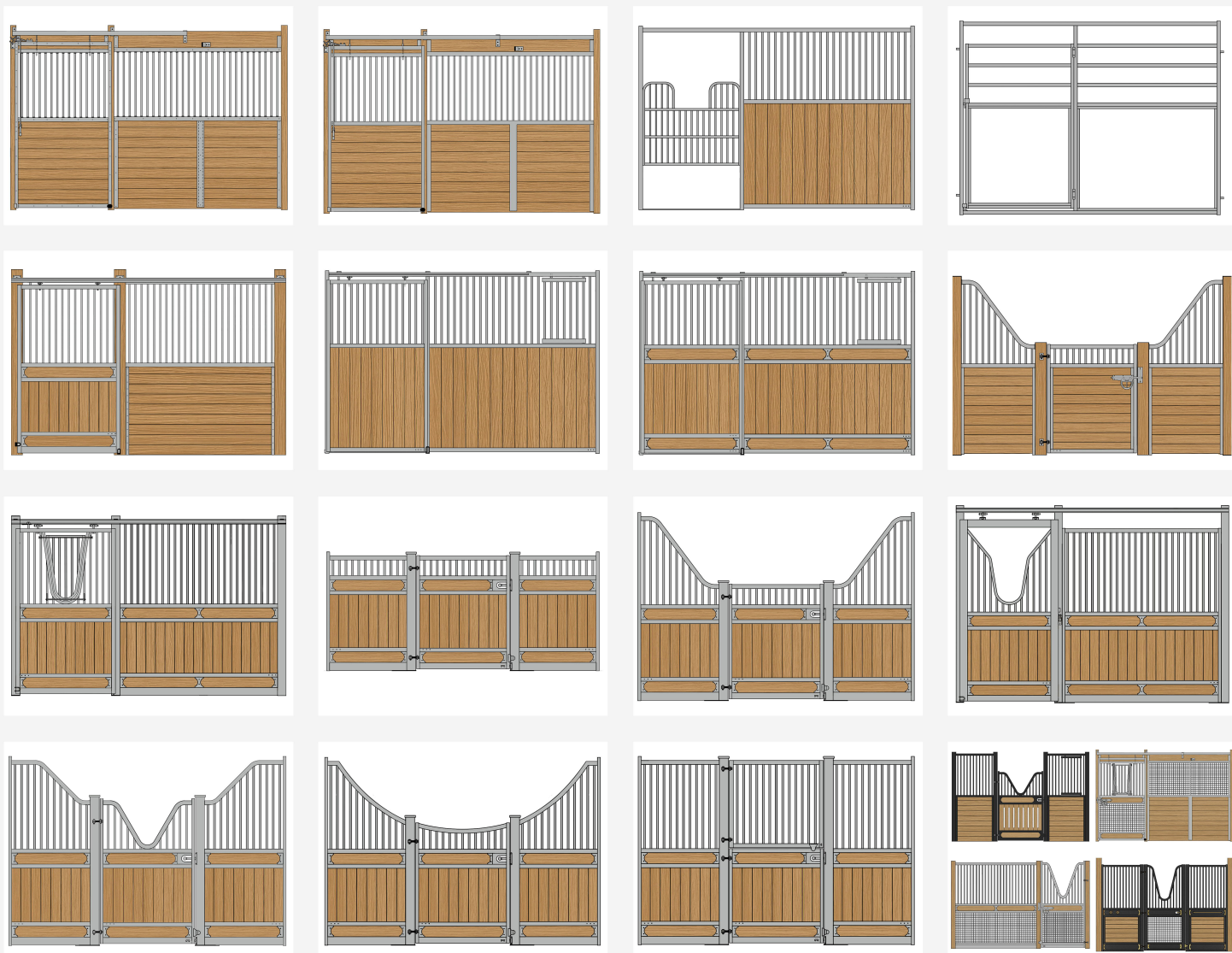
**Key Components:** Removable feeding trough (capacity: 20–40L), water bucket holder, ventilation grilles (15×15cm mesh), safety latches (child-proof optional), kick plates (1.0m height from floor to prevent damage)

**Assembly:** Modular design (tool-free connection optional); installation time: 2–4 hours per stall (2 people)

**Service Life:** Wood frame: ≥10 years; Steel frame: ≥15 years (proper maintenance)



## Different Types

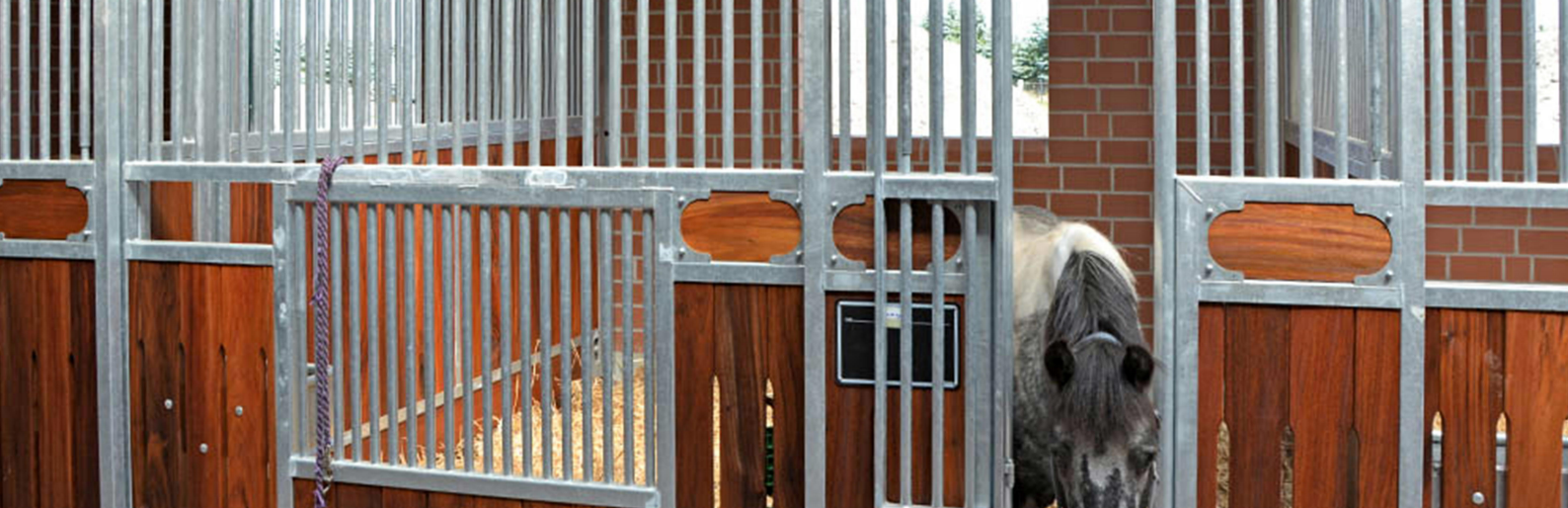


## Feeders



## Waterer





## Production Flow Chart



Selected Bamboo And Wood



Hot-Dip Galvanized Steel Pipes



Laser Cutting



Bamboo And Wood Installation



Electrostatic Powder Coating

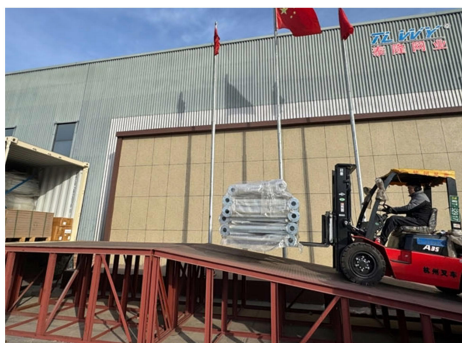


Square Tube Welding

## Package & Delivery



PANEL PACKAGES



DELIVERY



# FEATURES & APPLICATION

## FEATURES

### ✔ Structure and Layout

**Space Division:** Stables are typically divided into multiple stalls or stable areas, each accommodating one or more horses. Each stall should have sufficient space to ensure the horse can move freely without feeling confined.

**The general standard size of a horse stall** is approximately 3.6m x 3.6m (12 feet x 12 feet) to 4.2m x 4.2m (14 feet x 14 feet). However, the actual size varies depending on the size of the horse and usage requirements.

**Aisle Design:** Stables require wide aisles (usually more than 2.5 meters wide) between stalls to allow staff easy access and provide sufficient space for the horses to move around.

### ✔ Stable Doors and Passages

**Door Design:** Stable doors should be sturdy and durable, typically made of wood, metal, or composite materials. The door design should effectively prevent horses from escaping or other animals from entering. Stable doors should be easy to open and close and ensure safety, often with additional locks.

**Door Height:** The door height is usually 2.4 meters or higher to ensure there are no obstacles when horses enter or exit.

**Passages and Entrances:** Ensure the stable has convenient passage designs to facilitate bringing horses in and out, avoiding unnecessary stress and discomfort for the horses.

### ✔ Safety and Protection

**Protective Facilities:** Stables need facilities to prevent horses from injuring themselves or others. For example, all stable walls and railings should be designed without sharp edges to prevent horses from being injured during activity.

**Rail Design:** The partitions within the stable are usually made of sturdy wood or steel, and the spacing between the railings should not be too large to prevent the horse's head or hooves from getting stuck.

**Escape Prevention:** Ensure that the stable doors, windows, and fence structures are secure to prevent horses from escaping or causing unnecessary threats in the external environment.

### ✔ Stable Interior Facilities

**Feeding Area:** Each stall should have a designated feeding area, usually on one side or in a corner of the stall, for placing feed troughs or water troughs. The feed troughs should meet the horse's dietary needs and be easy to clean and maintain.

**Watering Facilities:** Watering facilities must be kept clean at all times, and a sufficient water supply must be ensured. Common watering facilities include troughs or automatic water dispensers, ensuring that horses have access to clean water at all times.

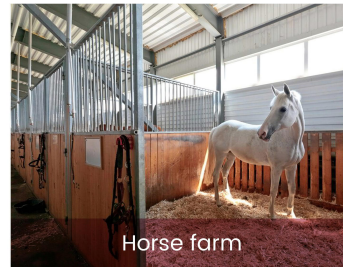
## APPLICATION



Equestrian club



Farm workhorses



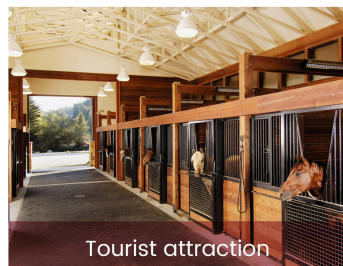
Horse farm



Horse management



Racecourse



Tourist attraction



Production-Workshop-1



Production-Workshop-2



Production-Workshop-3



Warehouse-1



Warehouse-2



Warehouse-3



## ANPING TAILONG

HARDWARE&WIRE MESH PRODUCTS CO.,LTD

+86-133-2318-6988  
+86-153-6985-6999

Sales@fence-global.com  
Sales@wiremesh-global.com

No.19, Jingsi road,  
high-tech-industrialdevelopment  
zone, Anping, Hebei, China

WHATSAPP

