

# ANPING TAILONG

HARDWARE&WIRE MESH PRODUCTS CO.,LTD

**TLWY**<sup>®</sup>  
**TaiLong Fence**



*DOUBLE SWING GATE*

**3D PANEL FENCE DOUBLE GATE**



Mobile:

+86-133-2318-6988  
+86-153-6985-6999



Email:

Sales@fence-global.com  
Sales@wiremesh-global.com



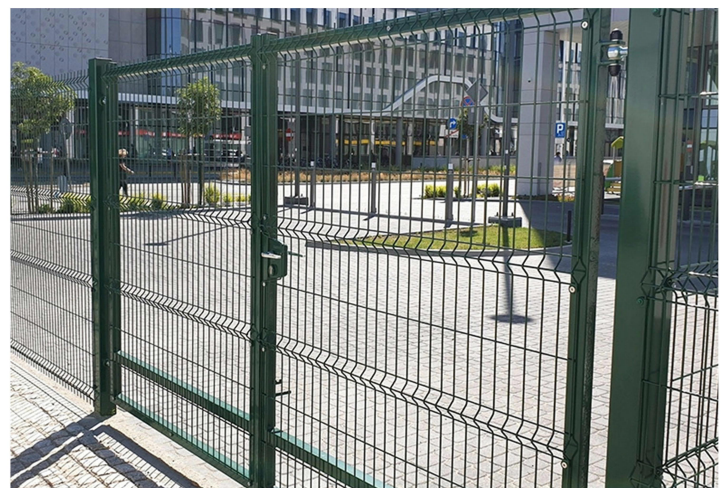
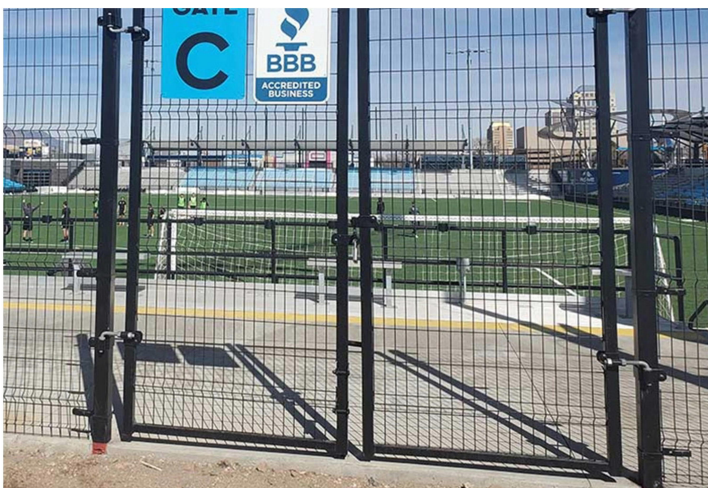
No.19, Jingsi road,  
high-tech-industrialdevelopment  
zone, Anping, Hebei, China



## 3D Panel Fence Double Gate

### 3D Metal Wire Fence Gate

3D Panel Fence Double Gate is a wide access solution integrated into a 3D panel fence system, consisting of two gate leaves that meet in the middle. Both leaves are constructed from the same 3D welded wire panels as the static fence, creating a wide, cohesive opening while maintaining the system's distinctive aesthetic and functional properties. The "3D" designation comes from the unique construction method where steel wires are welded in a V-shaped, three-dimensional pattern that provides exceptional rigidity and visual depth.





## DESCRIPTION

**Height:** 1.0m, 1.2m, 1.5m, 1.8m, 2.0m, etc

**Width:** 2.0m, 2.5m, 3.0m, 3.5m, 4.0m, 4.8m, 6.0m, 10.0m

**Mesh Opening:** 50\*100mm, 50\*200mm, 75\*150mm, etc.

**Wire Diameter:** 3.0mm, 3.5mm, 4.0mm, 4.5mm, 5mm, etc.

**Frame Tube:** 20\*20mm, 25\*25mm, 30\*30mm, etc.

**Post:** 60\*60mm, 80\*80mm, 100\*100mm, etc.

**Surface Treatment:** Hot Dipped Galvanized, Powder Coated, PVC Coated

**Color:** Silver, Black, Green, etc.



The 3D Panel Fence Double Gate provides an ideal combination of aesthetic appeal, functionality, and security for applications requiring wide vehicle access without compromising on visual appearance or protective qualities.

The gates can be installed to enclose premises, gardens, parks, schools, kindergartens, stores, etc.



## ANPING TAILONG

HARDWARE&WIRE MESH PRODUCTS CO.,LTD

+86-133-2318-6988  
+86-153-6985-6999

Sales@fence-global.com  
Sales@wiremesh-global.com

No.19, Jingsi road,  
high-tech-industrialdevelopment  
zone, Anping, Hebei, China

WHATSAPP

